

Mounting Structure GS810 Type

Flat Roof Solar Mounting



Features

Place of use: Flat Roof top or Ground

Wind load: max. 55m/s

Snow load: max. 1.5kN/m²

Solar module: Framed and unframed

Module orientation: Vertical or horizontal

Roof Angle: 5-60°

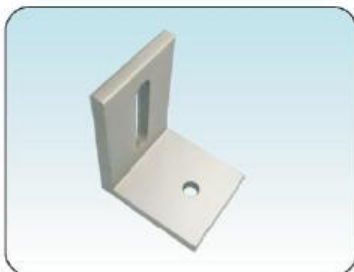
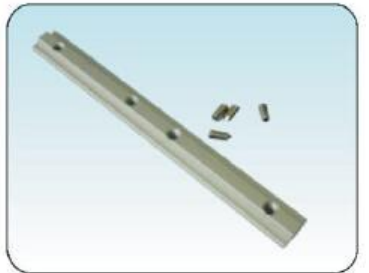
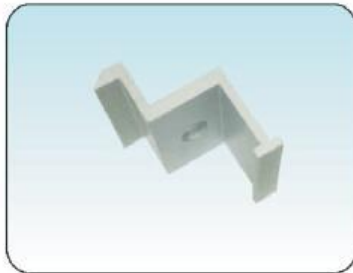
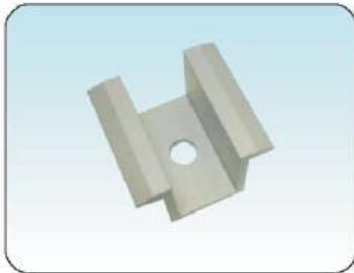
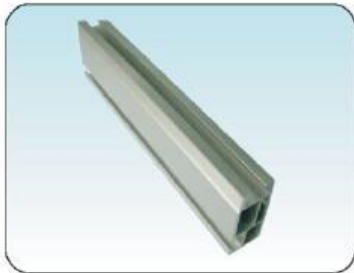
Surface treatment: Stainless steel , Anodized Aluminum

Material: Stainless steel SUS304, Aluminum 6063-T5

Standard: Suit for EU, AU, US standard

Warranty: 10years on materials

Components



Install Procedure

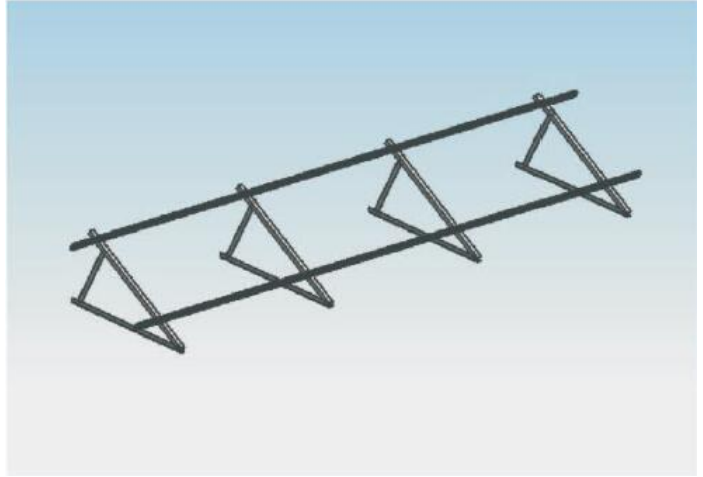
Step 1:

Install triangle bracket on the concrete ground with expansion bolts, as below:



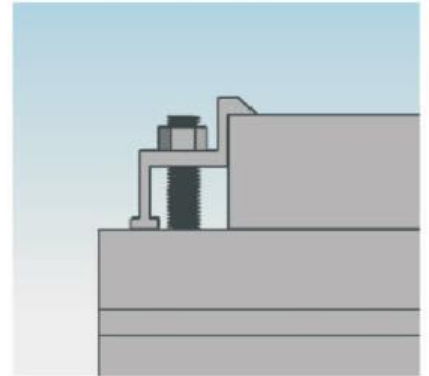
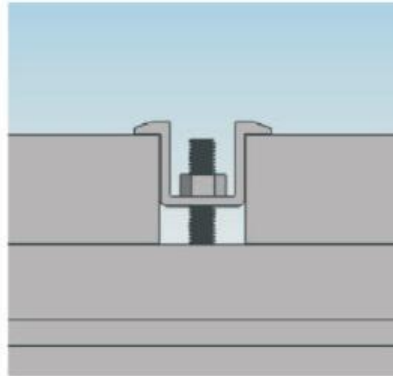
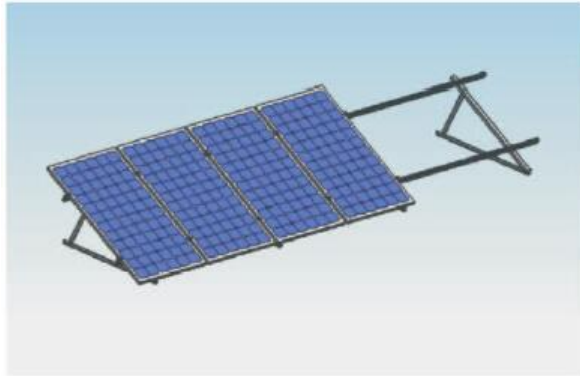
Step 2:

Install rail on the triangle bracket with T bolts, as below



Step 3:

Install solar panel with clamps and T bolts, as below:



Application

